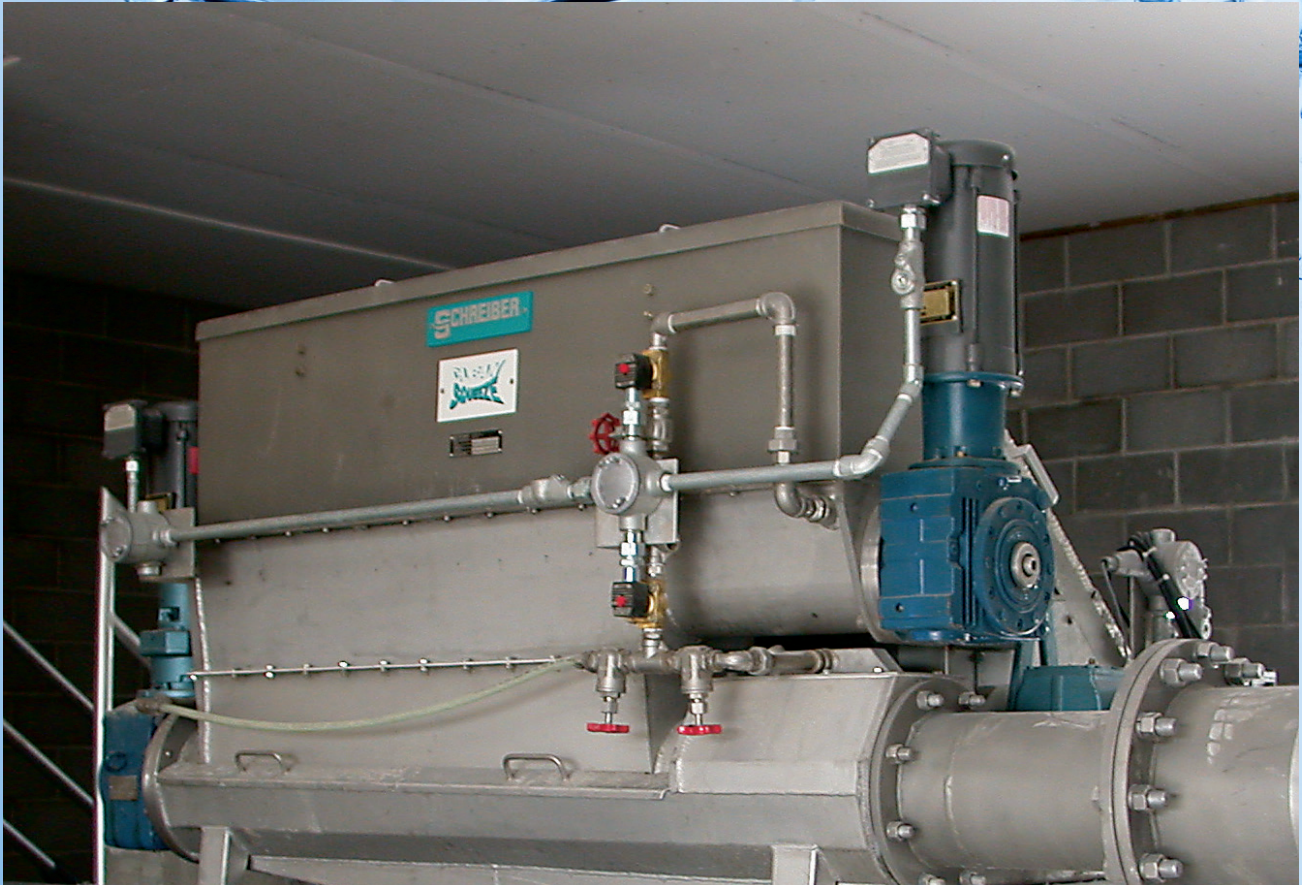


SCHREIBER

WasherCompactor



Removes organics and dewateres screenings for meeting today's stringent disposal requirements.

SCHREIBER WasherCompactor

The Schreiber Washer Compactor washes out organics in a batch sequence and dewateres screenings. Screenings enter the washer section of the unit and are agitated by a rotating shaftless screw while wash water is added. As the screw agitates in forward and reverse motion, organic substances are loosened from the screenings and drain back to the process stream. The

EASE OF OPERATION

The Schreiber Washer Compactor is controlled by a PLC for automatic operation and can be integrated with screen controls allowing the two pieces of equipment to operate as an efficient system. For ease of maintenance, the Washer Compactor is mounted over the influent channel on a rail track that enables the unit to be easily rolled away from the screen discharge.

EXCELLENT SCREENING RESULTS

Once washed and compacted by the Schreiber Washer Compactor screenings material is significantly reduced in both volume and organics, resulting in disposal cost savings. Washed, dewatered, and compacted material will pass the Paint Filter Test for disposal approval.

FLEXIBILITY OF INLET & DISCHARGE CONFIGURATIONS

Schreiber can manufacture inlet chutes to accommodate screenings from nearly any screen configuration. Additionally, screenings from the Washer Compactor exit via a discharge pipe that can be angled up to 45 degrees.



washed screenings are transferred over a barrier at one end of the wash trough into the compactor section below. The screenings are subsequently dewatered by the action of a compactor screw and conical discharge. The pressed screenings are then conveyed through a larger diameter discharge pipe.

The Schreiber Washer Compactor is manufactured in three model sizes with inlet lengths ranging from 3'-8" to 7'-10" and screenings capacities of 20 ft³/hr to over 100 ft³/hr.

MOTORS

Both the washing screw and the compacting screw of the Washer Compactor are driven by brushless motors that are approved for use in Class I, Division II areas per NEC. Class I, Division I motors are optional.

CORROSION PROTECTION

The Schreiber Washer Compactor is manufactured in 304 stainless steel for corrosion protection with 316 stainless steel as an available option.

OPTIONS

- Rock removal system
- 90° rotation of washer section with respect to compactor
- Compactor section available as stand-alone unit
- NEMA 7 control panel available (NEMA 4X SS panel is standard)
- Stainless steel wash water spraybar system

